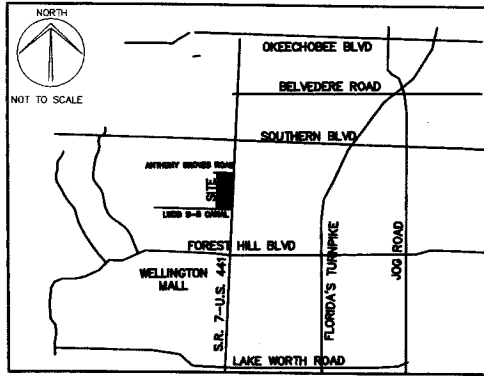
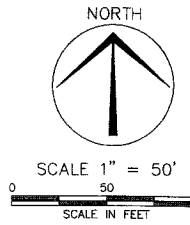


ARCHSTONE-FUTURA ENCLAVE

BEING A PARCEL OF LAND LYING IN THE EAST (1/2) OF SECTION 1, TOWNSHIP 44 SOUTH, RANGE 41 EAST, VILLAGE OF ROYAL PALM BEACH, PALM BEACH COUNTY, FLORIDA.
JANUARY 2012



VICINITY MAP
(NOT TO SCALE)



SCALE 1" = 50'
SCALE IN FEET

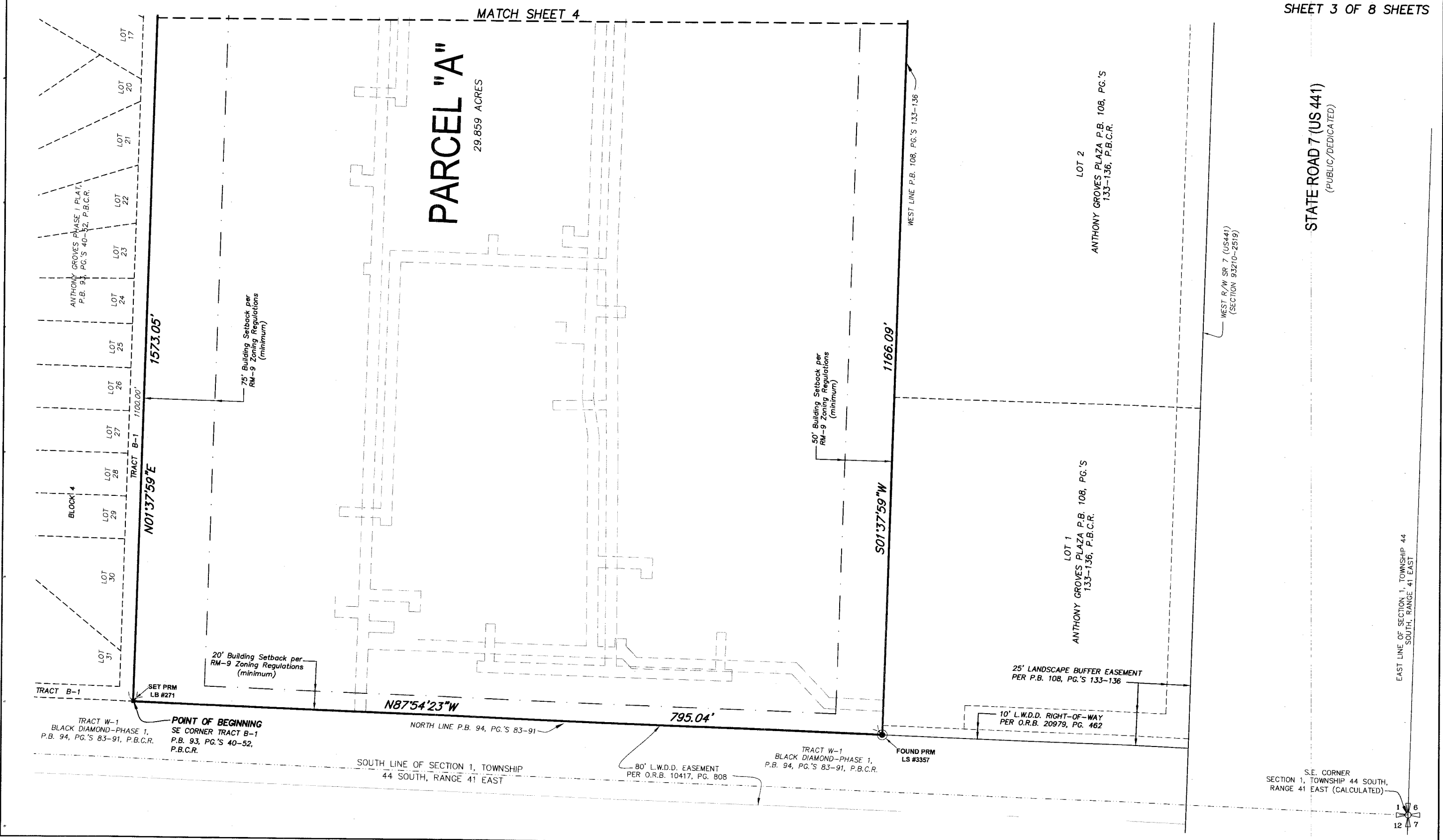
SHEET INDEX	
SHEET 1	DESCRIPTION, DEDICATIONS, CERTIFICATIONS AND KEY MAP
SHEET 2	ADDITIONAL CERTIFICATIONS
SHEETS 3-4	PLAT BOUNDARY
SHEETS 5-8	VILLAGE OF WELLINGTON UTILITIES WATER EASEMENT
SHEETS 7-8	VILLAGE OF WELLINGTON UTILITIES SANITARY SEWER & LIFT STATION EASEMENT

THIS INSTRUMENT WAS PREPARED BY:
MARK R. MINTER, P.S.M. #5785 OF
CRAVEN THOMPSON & ASSOCIATES, INC.
 ENGINEERS • PLANNERS • SURVEYORS
 3563 N.W. 53RD STREET FORT LAUDERDALE, FLORIDA 33309
 TEL: (954) 739-8400 FAX: (954) 739-8409
 JUNE 2011 06-0053

STATE OF FLORIDA
 COUNTY OF PALM BEACH
 THIS PLAT WAS FILED FOR RECORD AT
 THIS _____ DAY OF _____, 20____
 AND DULY RECORDED IN PLAT BOOK NO. _____
 SHARON R. BOCK
 CLERK & COMPTROLLER
 BY _____ DEPUTY CLERK

121

SHEET 3 OF 8 SHEETS



STATE ROAD 7 (US 441)
(PUBLIC/DEDICATED)

EAST LINE OF SECTION 1, TOWNSHIP 44 SOUTH, RANGE 41 EAST

S.E. CORNER SECTION 1, TOWNSHIP 44 SOUTH, RANGE 41 EAST (CALCULATED)

12 8 7